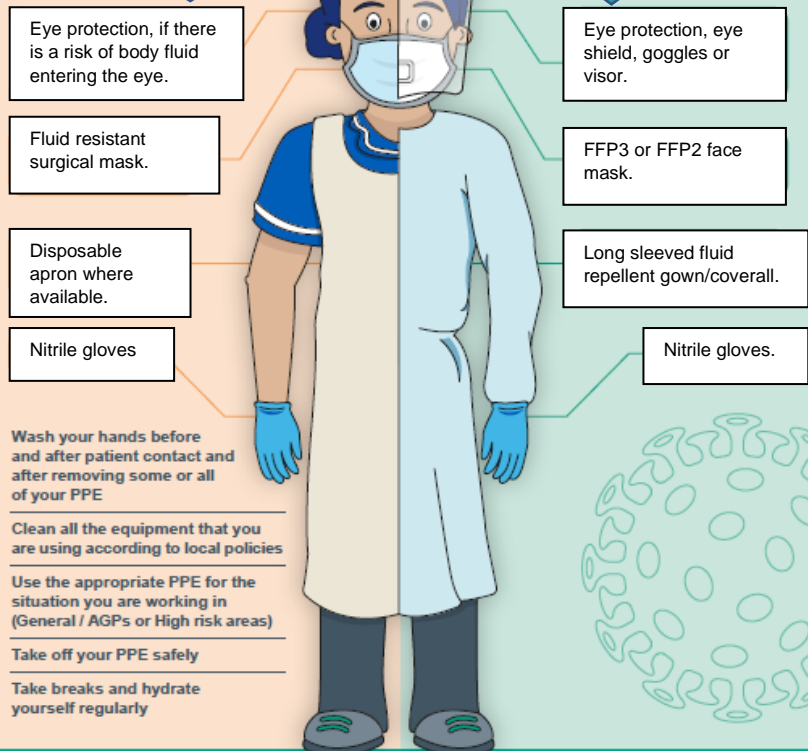


COVID-19 CUSTODIAL PPE Guidance

PPE for use in prison based on guidance published by Public Health England, for activities requiring close contact with a possible COVID-19 case.

Contact with confirmed or suspected COVID-19 cases and mandatory security tasks

Escort to hospital, bed watch, CPR or self-harm response, cleaning post BBV* incidents involving spray treatments.



For further information and detailed operating procedures please refer to the Safe Operating Procedures as issued from Gold Command.

*BBV – Blood Borne Virus